



All Categories (<https://manuals.velleman.eu/category.php>)

- ⊕ ALLBOT robotics (17) (<https://manuals.velleman.eu/category.php?id=85>)
- ⊕ Arduino kits & modules (9) (<https://manuals.velleman.eu/category.php?id=242>)
- ⊕ Instruments (6) (<https://manuals.velleman.eu/category.php?id=147>)
- ⊖ Kits (85) (<https://manuals.velleman.eu/category.php?id=1>)
 - ⊕ 0.35mm Direct drive extruder for K8200 (K8203) (2) (<https://manuals.velleman.eu/category.php?id=56>)
 - ⊕ Component tester kit (K8115) (4) (<https://manuals.velleman.eu/category.php?id=263>)
 - ⊕ DIY Mini quadcopter kit (K/RCQC2) (3) (<https://manuals.velleman.eu/category.php?id=255>)
 - ⊕ Extension set for K8200 (K8206) (2) (<https://manuals.velleman.eu/category.php?id=210>)
 - ⊕ Extradrive - (a)symmetric overdrive effect pedal (K8111) (2) (<https://manuals.velleman.eu/category.php?id=127>)
 - ⊖ Fuzz box- full distortion effect (K8113) (2) (<https://manuals.velleman.eu/category.php?id=209>)
 - 1. PCB and schematic (<https://manuals.velleman.eu/article.php?id=558>)
 - 2. Assembly manual (<https://manuals.velleman.eu/article.php?id=541>)**
 - ⊕ Paste extruder set for K8200 (K8205) (2) (<https://manuals.velleman.eu/category.php?id=146>)
 - ⊕ RGB LED add-on for Vertex 3D printer (K8403) (1) (<https://manuals.velleman.eu/category.php?id=73>)
 - ⊕ Stereo ultrasonic sound and bat detector (K8118) (3) (<https://manuals.velleman.eu/category.php?id=240>)
 - ⊕ The Tremor - optical tremolo effect pedal (K8110) (2) (<https://manuals.velleman.eu/category.php?id=126>)
 - ⊕ Vertex 3D printer (K8400) (37) (<https://manuals.velleman.eu/category.php?id=2>)
 - ⊕ Vertex Nano 3D printer (K8600) (25) (<https://manuals.velleman.eu/category.php?id=203>)
- ⊕ Mini Modules (18) (<https://manuals.velleman.eu/category.php?id=105>)
- ⊕ Modules (20) (<https://manuals.velleman.eu/category.php?id=63>)
- ⊕ Tutorials (3) (<https://manuals.velleman.eu/category.php?id=218>)

2. ASSEMBLY MANUAL

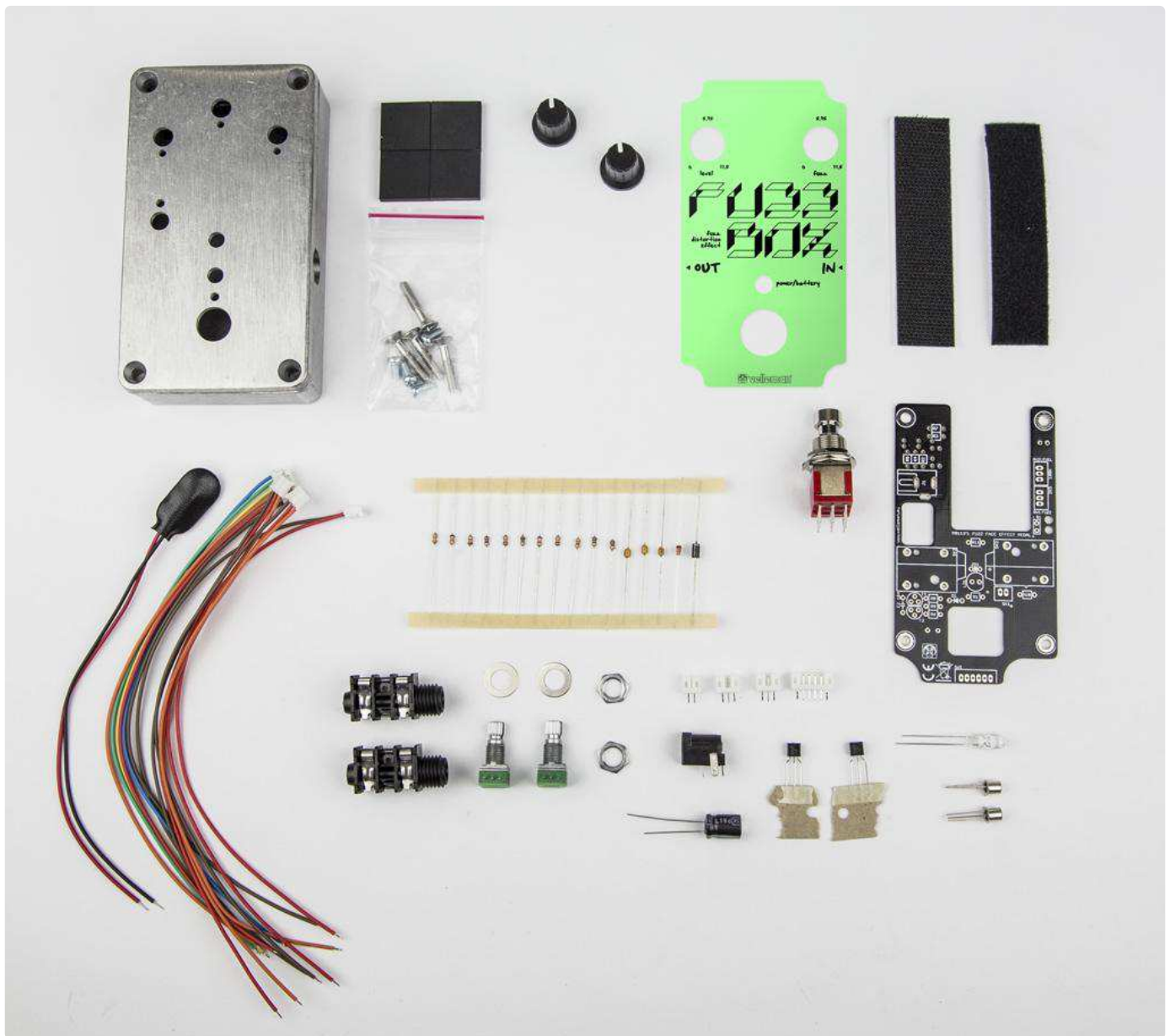
WHAT'S IN THE BOX

- 1 x back sticker
- 1 x front sticker
- 1 x capacitor 220µF / 25V
- 1 x capacitor 10µF / 50V
- 1 x female 2 poles step 2mm + 20cm
- 2 x female 3 poles step 2mm + 20cm
- 1 x female 6 poles connector step 2mm + 20cm
- 1 x male 2 poles connector 2.00mm
- 2 x male 3 poles connector 2.00mm
- 1 x male 6 poles connector 2.00mm
- 3 x axial capacitor 100µF



- 1 x DC socket 2.5mm / 5.5mm solder connections
- 1 x modified enclosure, effect pedal case 1 + screws
- 1 x guitar pedal switch 3PDT
- 1 x potmeter 2K5 Mono Lin Hor 300°
- 1 x potmeter 100K Mono Lin Hor 300°
- 2 x black plastic knob D16
- 1 x rubber foot
- 1 x blue LED 5 mm waterclear
- 1 x rubber foot
- 2 x mono switched jack
- 1 x PCB
- 1 x battery snap for 1 x 9V cell
- 1 x diode 1A - 1000V - 1N4007
- 2 x SI transistor NPN 45V-0.1A-300MHz - BC108
- 1 x SI transistor NPN 50V-0.2A - BC547
- 1 x SI transistor PNP 50V-0.2A - BC557
- 1 x resistor 100E
- 2 x resistor 10K
- 2 x resistor 18K
- 2 x resistor 1M
- 1 x resistor 270R
- 1 x resistor 390Ohm
- 1 x resistor 4K7
- 1 x resistor 68K
- 1 x zener diode 3V3 - 500mW
- 1 x shrinkable tube 12,7mm
- 1 x shrinkable tube 2,4mm
- 1 x shrinkable tube 3,2mm
- 1 x zip fix (hooks)
- 1 x zip fix (loops)





(<http://images.velleman.eu/manuals/k8113/001.jpg>)

ASSEMBLY INSTRUCTIONS

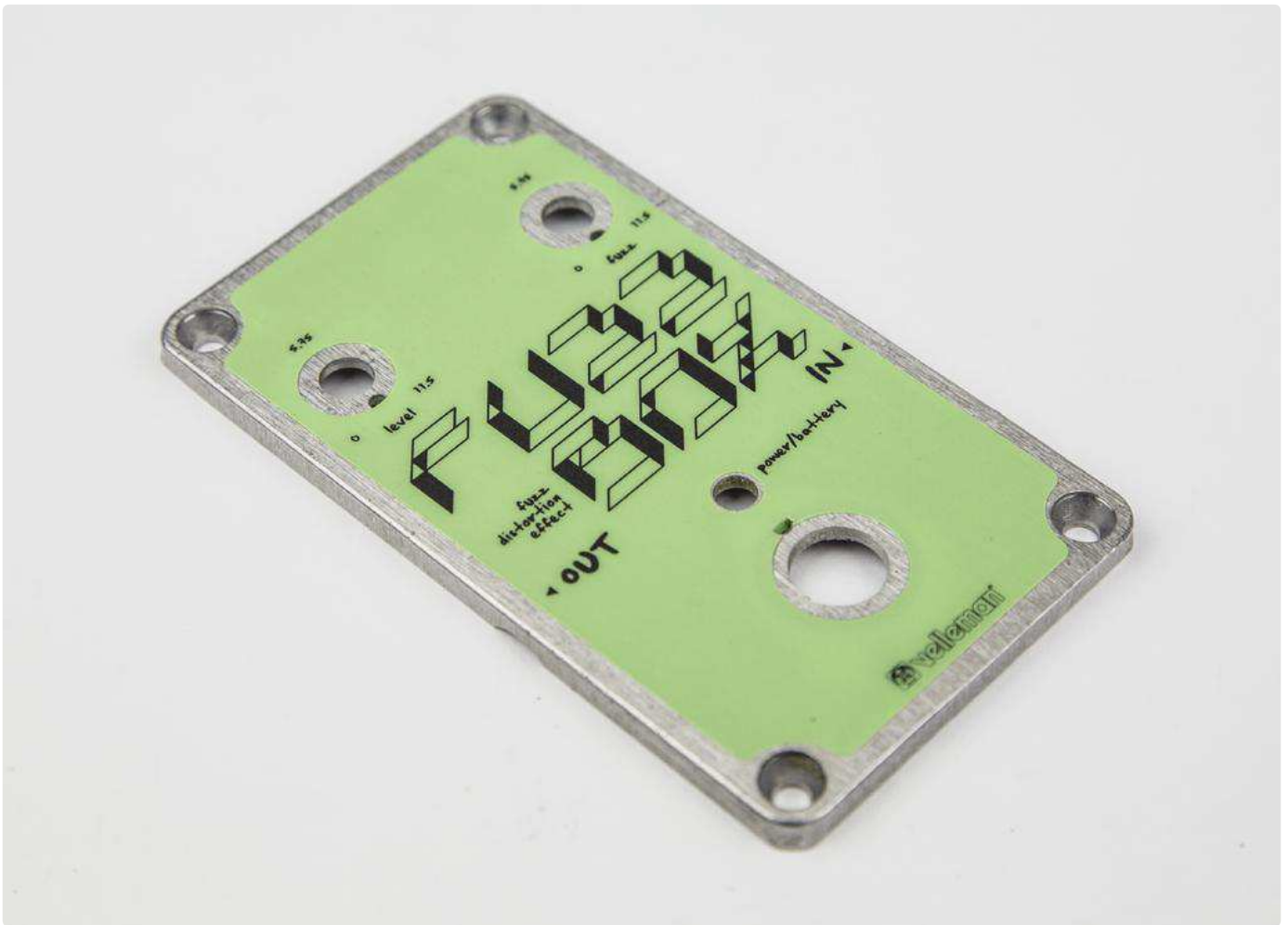
1. Place the 2 supplied cover stickers as shown in the images below. **Note the orientation of the bottom cover!**





(<http://images.velleman.eu/manuals/k8113/002.jpg>)

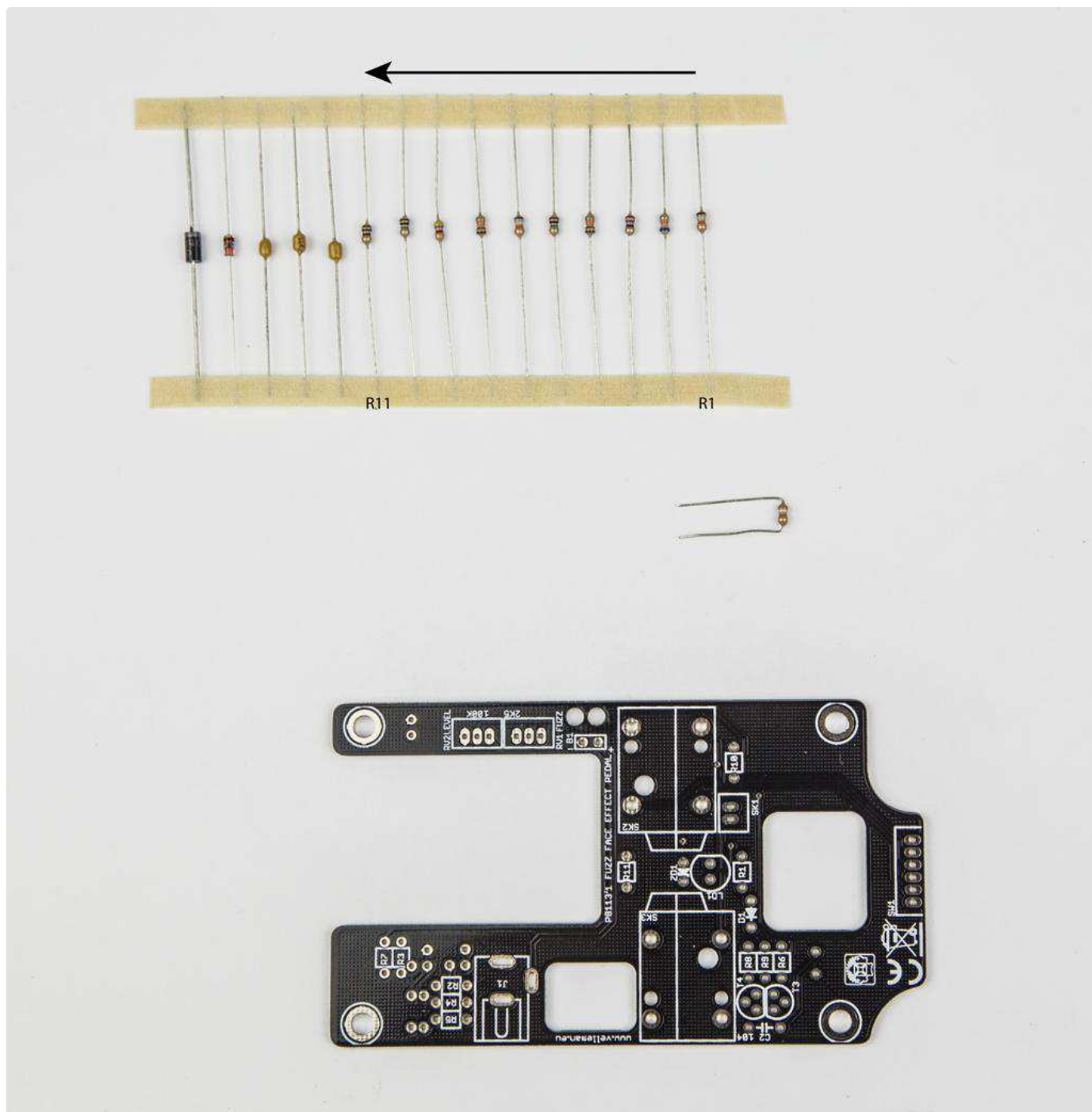




(<http://images.velleman.eu/manuals/k8113/003.jpg>)

2. All resistors are placed in the correct order of usage on the supplied tape. Solder R1 to R11 accordingly.

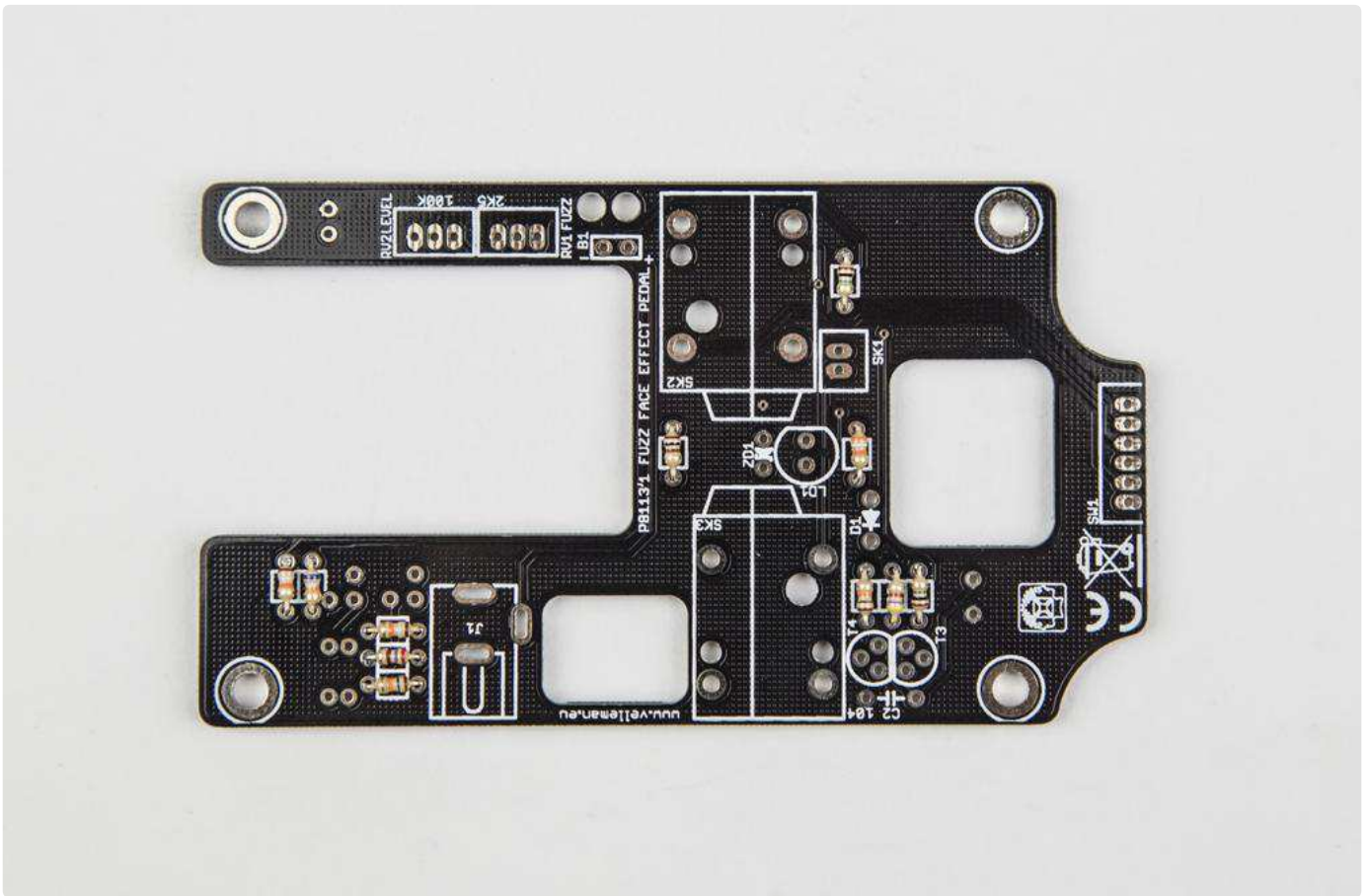




(<http://images.velleman.eu/manuals/k8113/004.jpg>)

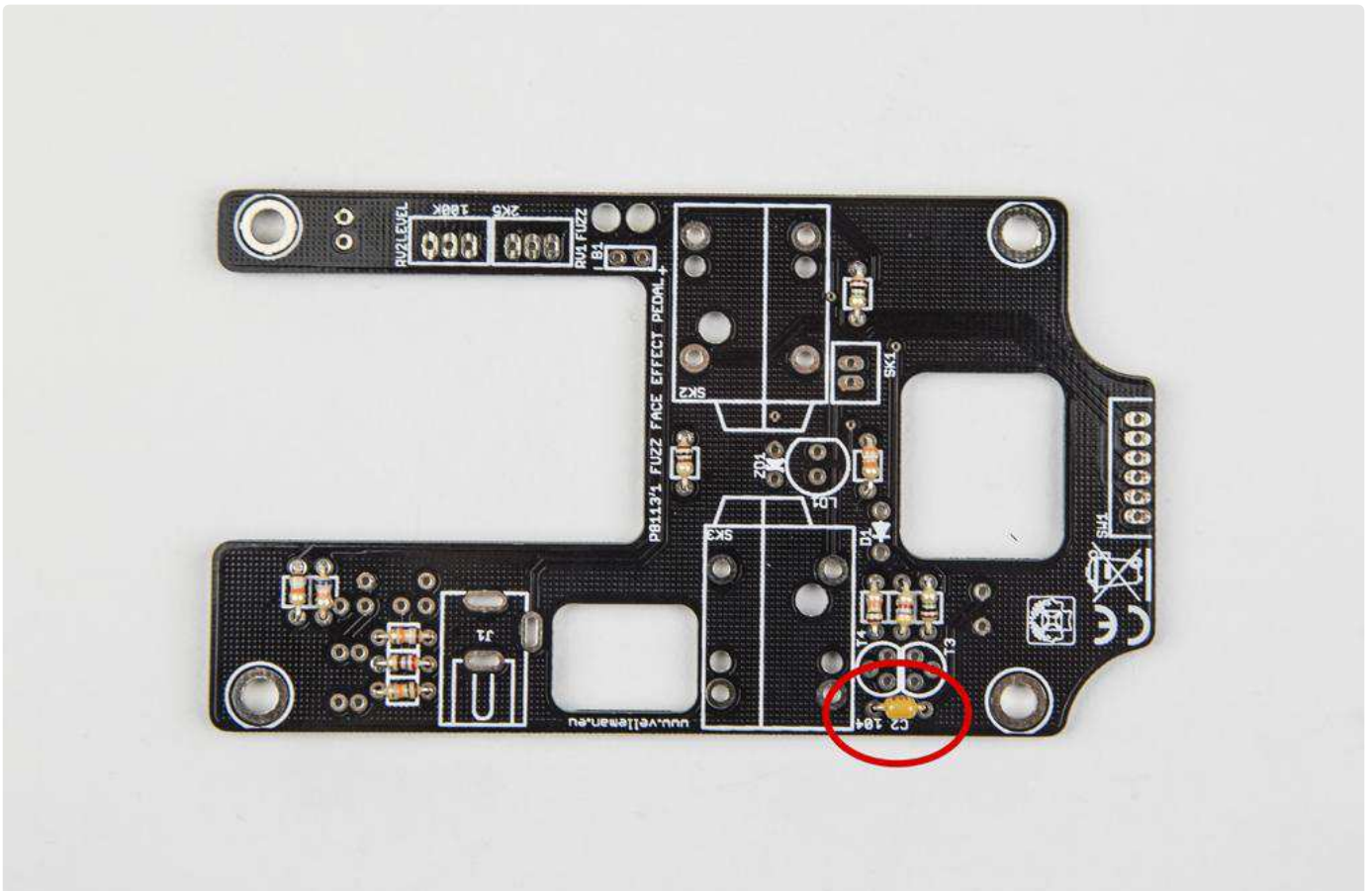
- **R1:** 390E
- **R2:** 18K
- **R3:** 68K
- **R4:** 270E
- **R5:** 10K
- **R6:** 1M
- **R7:** 18K
- **R8:** 10K
- **R9:** 4K7
- **R10:** 1M
- **R11:** 100E





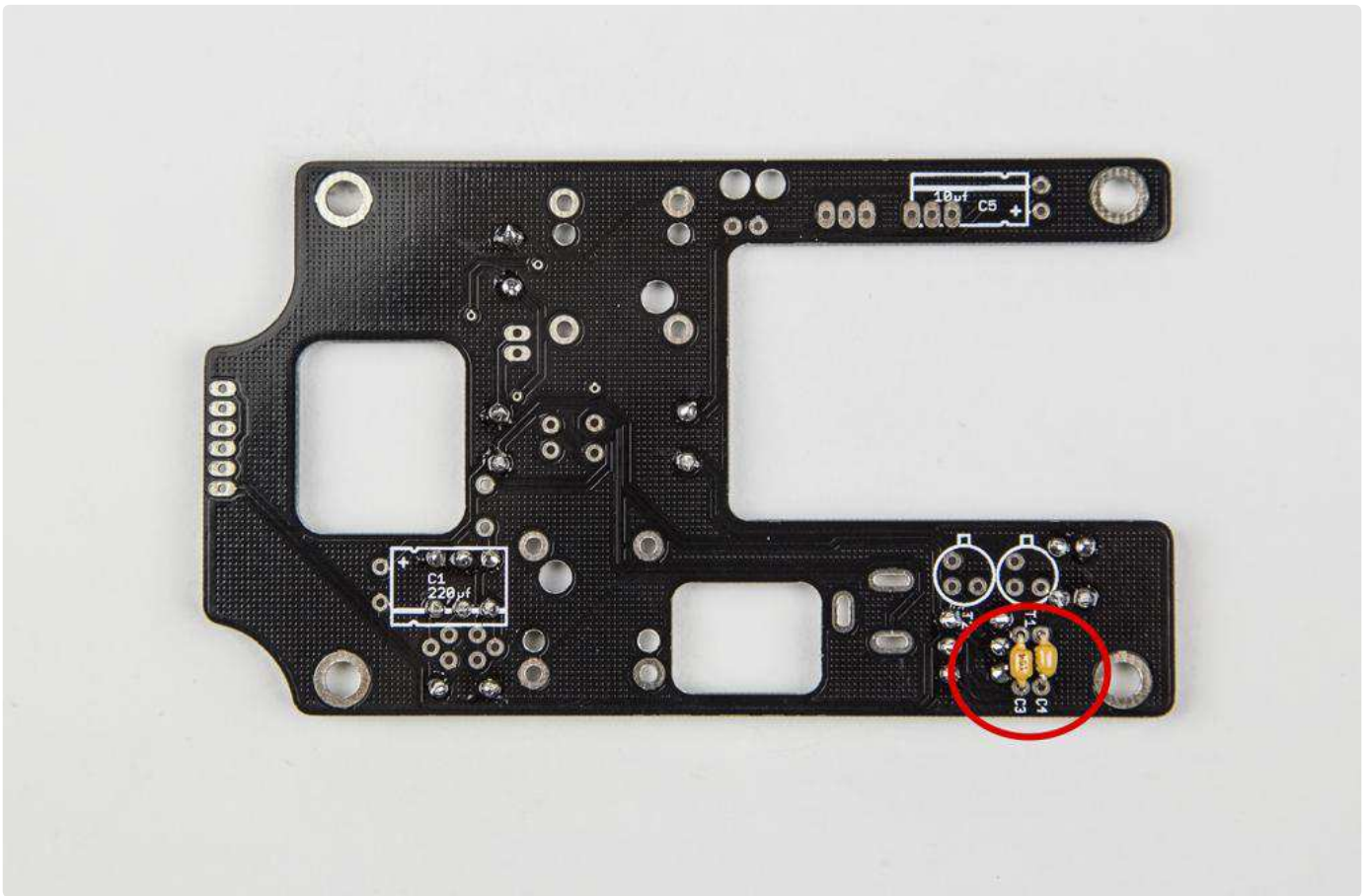
(<http://images.velleman.eu/manuals/k8113/005.jpg>)

3. **100nF axial capacitors: C3, C4 and C2. Solder C3 and C4 on the bottom of the PCB!**



(<http://images.velleman.eu/manuals/k8113/006.jpg>)





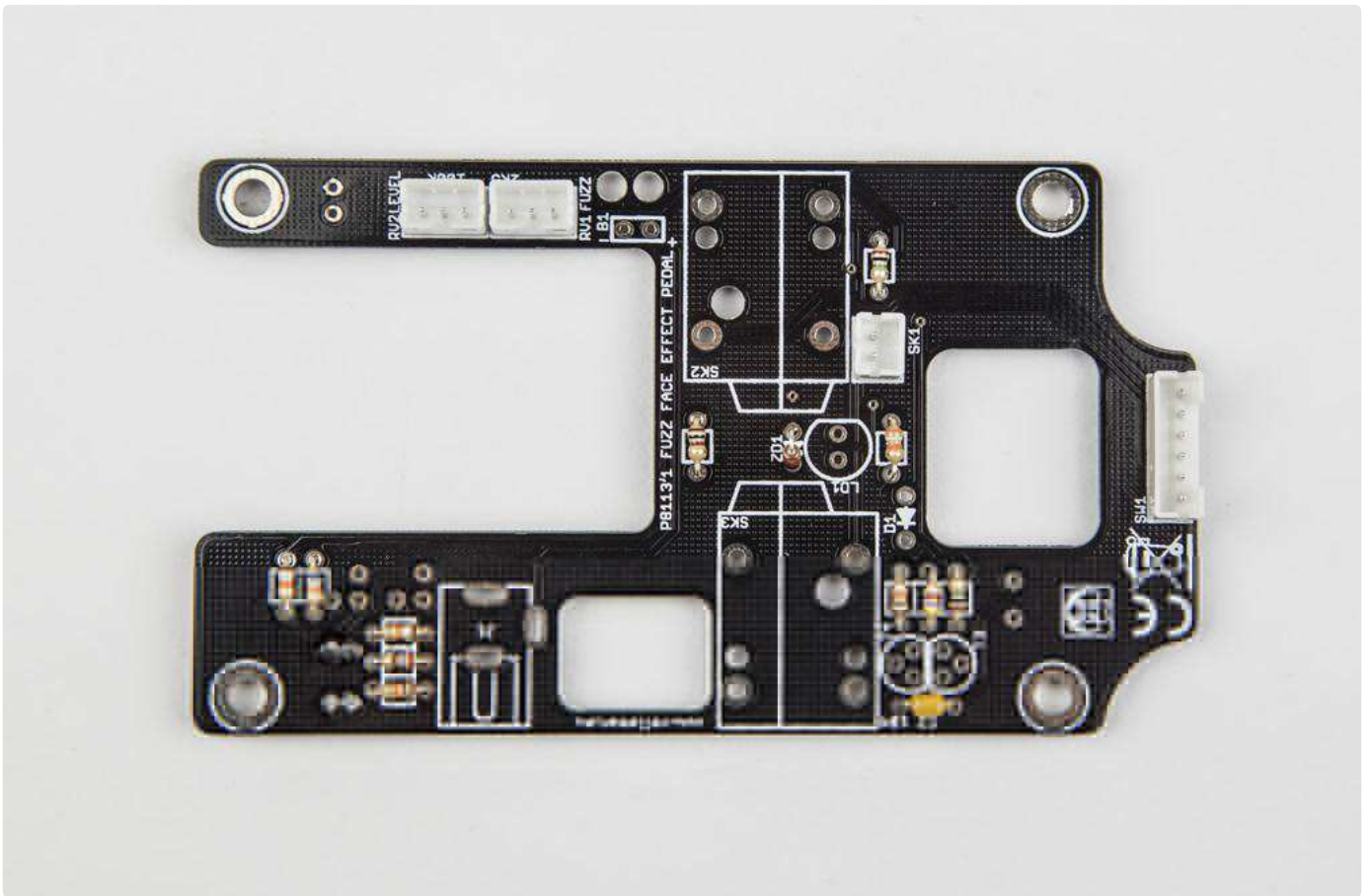
(<http://images.velleman.eu/manuals/k8113/007.jpg>)

4. **Zenerdiode:** ZD1

Note the orientation!

(<http://images.velleman.eu/manuals/k8113/008.jpg>)





(<http://images.velleman.eu/manuals/k8113/010.jpg>)



(<http://images.velleman.eu/manuals/k8113/011.jpg>)

6. Transistors:

- T3: BC547



- **T4: BC557**



(<http://images.velleman.eu/manuals/k8113/012.jpg>)

(<http://images.velleman.eu/manuals/k8113/013.jpg>)

7. Diode 1A - 1000V - 1N4007: D1

(<http://images.velleman.eu/manuals/k8113/014.jpg>)

(<http://images.velleman.eu/manuals/k8113/015.jpg>)

8. DC socket 2.5 mm / 5.5 mm (jack): J1

(<http://images.velleman.eu/manuals/k8113/016.jpg>)

9. Mono switched jack: SK2 and SK3

(<http://images.velleman.eu/manuals/k8113/017.jpg>)

10. Blue LED 5 mm waterclear: LD1 Make sure it stands +- 12mm above the PCB!

Watch the polarity!

(<http://images.velleman.eu/manuals/k8113/018.jpg>)

(<http://images.velleman.eu/manuals/k8113/019.jpg>)

11. capacitor 220µF / 25V: C1 Solder the capacitor on the bottom side of the PCB!

Watch the polarity!

